

**LNG**  
**POWERED**



Trailing suction hopper dredger

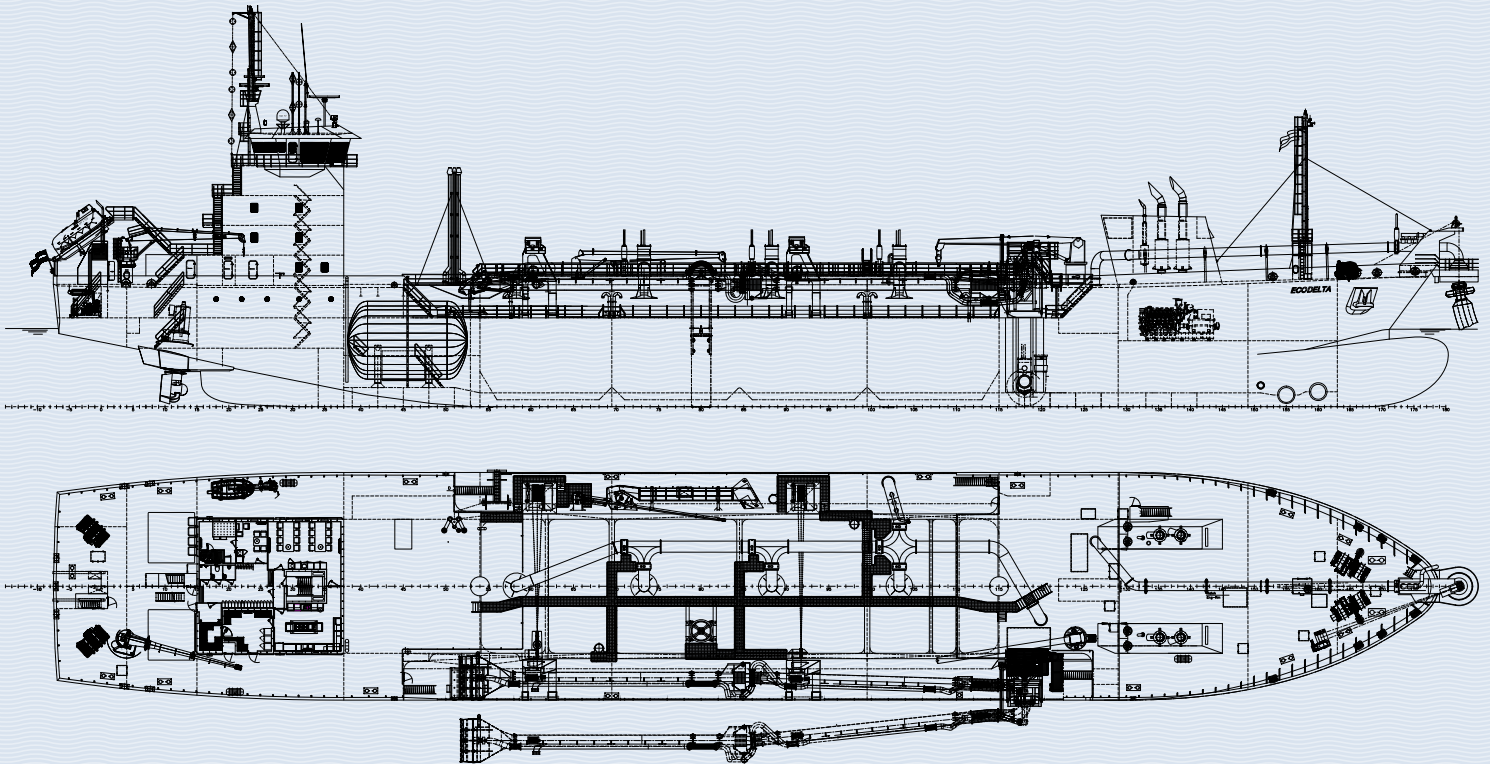
**ECODELTA**



VAN DER KAMP



# Trailing suction hopper dredger ECODELTA



**LENGTH L.L.:**  
120,08 METRES

**LENGTH O.A.:**  
134,10 METRES

**BREADTH:**  
21,40 METRES

**DRAUGHT:**  
7,77 METRES

**HOPPER CAPACITY:**  
5.901 M<sup>3</sup>

**SUCTION PIPE:**  
Ø 1000 MM. DREDGE  
PUMP, DRIVE UNIT 1500 KW

**MAXIMUM DREDGING DEPTH:**  
37 METRES

**DISCHARGE SYSTEM  
BY MEANS OF:**

- A. BOTTOM SLIDES
- B. SHORE DELIVERY  
UNIT, MAXIMUM  
3.000 KW

**PROPULSION:**  
2 THRUSTERS  
2300 KW EACH

**SPEED:**  
EMPTY 13 MILES AND  
LOADED 11 MILES/HOUR

**ACCOMODATION:**  
18 PERSONS



**VAN DER KAMP**

Van der Kamp  
International Dredging B.V.

Visiting address:  
Beukenallee 1  
8019 BA Zwolle  
The Netherlands

Bagger- en Aannemingsmaatschappij  
Van der Kamp B.V.

Correspondence:  
P.O. Box 146  
8000 AC Zwolle  
The Netherlands

P : +31 (0)38 - 421 75 47  
E : office@vanderkampbv.nl  
I : www.vanderkampbv.nl